

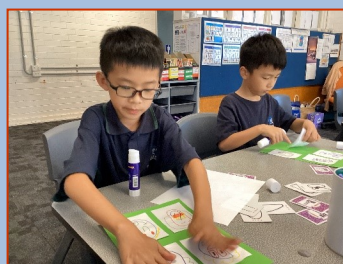
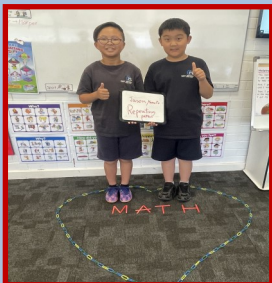
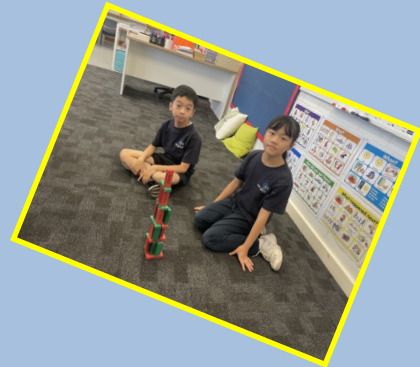


Mathematics in M6A and M8

In M6A and M8, we have embarked on an exciting journey into the world of mathematics, but with a twist! Instead of sticking to the conventional approach, we have embraced a multidisciplinary perspective, integrating mathematics into various fields.

Students used situational thinking not just as mathematicians but as collaborators, artists, engineers, designers, and historians utilizing situational thinking to tackle problems from multiple angles.

Let's continue to explore, create, and innovate together on this multidisciplinary mathematical journey!



PRINCIPAL'S MESSAGE

Dear Parents,

NAPLAN

Over the next two weeks the students in Years 3 and 5 will complete the NAPLAN testing in the learning areas of Numeracy, Reading, Writing, Spelling and Language Conventions. The tests assess literacy and numeracy skills that students are learning through their regular school lessons and provide a snapshot of student achievement. The NAPLAN results are made available to families and the school later in the year. Teachers use the results to help identify students who need greater challenges or extra support. Schools use the collective results to identify strengths and areas of need to improve teaching programs, and to set literacy and numeracy goals.

Governing Council

The Governing Council will meet again next week. The Governing Council is made of school staff and parent volunteers who work with the principal to help set and monitor the directions of the school. This includes working with the principal to involve the local community, develop and improve local policies, set broad directions and visions for the school, monitor the School Improvement Plan and OSHC. We thank our 2024 Governing Council members for their support of the school. The members are:

CHAIRPERSON:	Lindsay Whitelaw
VICE-CHCHAIRPERSON:	Jessica Moule
SECRETARY:	Michelle Rogers
TREASURER:	To be confirmed
MEMBERS:	Angs Banerjee Amanda Trainor Ashleigh McLeod Doug Corpus Jo Edwards Linna Niu Louise Cameron Sean Colyer Simone Thomas

The Governing Council has approved the Pupil Free Days and School Closure Day for the year.

These are:

- Term 2 - Pupil Free Day, Tuesday 11/6/24,**
- Term 3 - School Closure Day, Monday 2/9/24**
Pupil Free Day, Tuesday 3/9/24
- Term 4 - Pupil Free Day, Friday, 1/11/24 .**

The Pupil Free Days are used for whole staff training sessions. OSHC is available on these days.

Parking

Included in this newsletter is parking advice from the local council. It is important that families follow parking rules to avoid getting a fine or being unsafe for children. Families are also reminded that parking in the staff and OSHC carparks is only permitted with a government issued disabled parking access or school supplied parking passes. These should be displayed visibly when parking in the school carpark.

Harmony Day

Harmony Day is being held on **Friday 22st March** with a whole school parade and class activities. Harmony Day is a day to celebrate Australian multiculturalism. It celebrates inclusiveness, respect and belonging for all Australians. **The school parade will be held in the quad at 9am with family members invited to attend. Students are invited to dress in their national dress or orange, which is the official colour of Harmony Day.**

Sports Day

Our Sports Day will be held on **Thursday 28th March from 8.40 am to 3.00pm**. This is an opportunity for our students to showcase their sporting skills, participate in team activities and have fun. **Family members are invited to join us.**

Kind Regards,

Lynette Simons

Term 1 2024 Calendar

	MON	TUE	WED	THU	FRI
	29/1/24	30/1/24	31/1/24	1/2/24	2/2/24
WK 1	2024 School year commences				
	5/2/24	6/2/24	7/2/24	8/2/24	9/2/24
WK 2					
	12/2/24	13/2/24	14/2/24	15/2/24	16/2/24
WK 3		Acquaintance Night			
	19/2/24	20/2/24	21/2/24	22/2/24	23/2/24
WK 4	PUPIL FREE DAY OSHC available				
	26/2/24	27/2/24	28/2/24	29/2/24	1/3/24
WK 5	Governing Council AGM 6.00 pm			Principal School Tour 10.00 am	
	4/3/24	5/3/24	6/3/24	7/3/24	8/3/24
WK 6					
	11/3/24	12/3/24	13/3/24	14/3/24	15/3/24
WK 7	Adelaide Cup Day OSHC closed				
	18/3/24	19/3/24	20/3/24	21/3/24	22/3/24
WK 8	Governing Council MTG 6.00 pm			Harmony Day	
	← Three Way Conferences →				
	25/3/24	26/3/24	27/3/24	28/3/24	29/3/24
WK 9	Holi Festival			Sports Day	Good Friday OSHC closed
	1/4/24	2/4/24	3/4/24	4/4/24	5/4/24
WK 10	Easter Monday OSHC closed				
	8/4/24	9/4/24	10/4/24	11/4/24	12/4/24
WK 11					End of Term 1 Early Dismissal 2.00 pm



Respect



Empathy



Excellence



Community



Government of South Australia
Department for Education

What's up in Wellbeing

FROM THE NEST

A NOTE FROM MR EVANS

Hello every one! I wanted to start this edition with a quick note from me, Mr Evans, regarding the last few weeks, staff changes and the amazing resilience shown by the East Torrens Community! I've been fortunate enough to step into the role of Wellbeing Leader while Ms Piro has been away sick. While I, like all of us, can't wait to see Ms Piro return - and we won't have to wait long for that, trust me! - I have also been blown away by how resilient, patient and understanding all of us have been these last few weeks without her. Thank you to all the staff, families and especially the students who have made my job not only easier but incredibly fun and rewarding. Thank you to Mr M who has stepped into the STEM role over the last few weeks, and thank you to all the students who have shown me empathy and respect in my new role, while helping our community by embracing this chance to be excellent!



THANK YOU TO GAURI!

This week we said goodbye to a member of our community. Gauri from R13 is moving back to India with her family. Before she left though she paid Mr Thom a surprise visit, donating her bike to the school for use in Wheels Wednesday! What a wonderful gesture! We want to wish Gauri and her family all the best for the future!



Upcoming Events



HARMONY DAY

Friday the 22nd of March we will be celebrating Harmony Day by dressing in traditional dress and orange, the colour of Harmony and working together.

At 9am we will come together on the quad for a parade to show off our costumes and to celebrate the diverse and vibrant community we have here at ETPS.

FUNDRAISING

Thank you everyone who ordered Kites through our Friends at Zoom! We officially hit our minimum order and managed to raise over \$250 for the school! Stay tuned for more news regarding kite deliveries.



FOR MORE VISIT: <https://zoomkites.com.au/order/>

Parking Near Schools

NO STOPPING



You **CANNOT** stop in these areas **FOR ANY REASON**.
You **CANNOT** stop to drop off or pick up children/passengers.

YELLOW LINES (continuous)



You **CANNOT** stop on a yellow line **FOR ANY REASON**.
You **CANNOT** stop to drop off or collect children/passengers.

BROKEN YELLOW LINES



A broken yellow line indicates a parking zone.
Please look for a sign to indicate parking restrictions.

'Kiss and Drop' NO PARKING



A No Parking Zone is for the **IMMEDIATE PICK UP** and **DROP OFF** of children/passengers. Within this zone you are only allowed to park for a maximum of 2 minutes and the driver must always remain within 3 metres of the vehicle. This means you cannot leave your vehicle unattended.

If your child is not present, you will need to move on to ensure the zone works effectively for all users. Make sure to check signs for times that the zone is active.

BUS ZONE

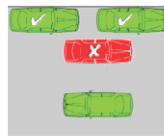


You must **NOT** stop or **PARK** in a bus zone.
You **CANNOT** drop off or collect children/passengers even if there is no bus in sight.
Most bus zones are 30 metres long. 20 metres before the bus stop and 10 metres after.



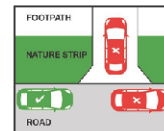
A safe, sustainable, vibrant Community

DOUBLE PARKING



You must **NOT** stop on the road adjacent to another vehicle at any time.
You **CANNOT** drop off or pick up children/passengers.

FOOTPATH AND DRIVEWAYS



You **CANNOT** stop or park and leave your vehicle on a **FOOTPATH** or **NATURE STRIP** or across a **DRIVEWAY**.

BIKE LANES



You **CANNOT** stop in these lanes **FOR ANY REASON**. You may not stop to drop off or collect children/passengers.

Please note that almost all major roads will have Bike lanes and or Clear way zones.

If no times are displayed on the signs it, means the zone is effective 24 hours 7 days a week.

ROAD SAFETY TIPS

- Make the effort to use the designated crossing, even if it means walking a little further
- Organise to meet your child at an agreed safe place, with preference to collect them from the same side of the road as the school where possible
- Park and meet your child, don't call them to cross the road by themselves
- Avoid U-turns and 3-Point Turns within school zones – this confuses other traffic and children.



UNIFORM SHOP

OPEN

Tuesday 8.30 am - 9.30 am
Thursday 2.30 pm - 3.30 pm



Respect



Empathy



Excellence



Community



Government of South Australia
Department for Education

Intensive English Language Program (IELP) News

Dear Families,

Welcome to all our new students and families. I look forward to getting to know you all.

Our Intensive English Language Classes are as follows...

Virginia Wong

Erin Pedler

Jacqui Prouza & Nunzia Ferraretto

Chamila Chandresena

Sarah Foureux & Rita Martucci

Shah Chowdhury

Ravinder Kaur

Rachel Colquhoun & Kathy Papas

M10 - R/1

M9 - Year 1

M9A - Year 2

M8 - Year 3

M7 - Year 3

M6 - Year 5

M6A - Year 5

M5 - Year 6



Kind regards,

Yiota Chronis

IELP Senior Leader

Reception/Year 1 (M10) Virginia Wong	Year 3 (M7) Sarah Foureux Rita Martucci
Arian G Hansol C Ava J	Gayathri R
Year 1 (M9) Erin Pedler	Year 4 (M6) Shah Chowdhury
	Leo X
Year 2 (M9A) Jacqui Prouza Nunzia Ferraretto	Year 5 (M6A) Ravinder Kaur
Ada C	Hanul C Karthi R Locki G
Year 3 (M8) Chamila Chandresena	Year 6 (M5) Rachel Colquhoun Kathy Papas
Robin K	



East Torrens Primary School is pleased to be promoting the [Entertainment Memberships](#) as a fundraiser.

Support our fundraising and enjoy 100s of everyday savings!

Entertainment is an easy-to-use App packed with incredible savings of up to 50% off and 2-for-1 offers, so you can save on takeaway, dining, shopping, groceries, gift cards, activities and more!

And what's even better, 20% of every [Entertainment Membership](#) purchased support Primary goes to East Torrens School!



Did you know we have a group?



facebook group?



The group is private to accepted members only.

(Acceptance to the group is determined by the relationship that the person requesting to join has to our school).

The group is for sharing information and images from various events and general happenings at East Torrens Primary School.

If you would like to join, please search for [East Torrens Primary School group](#), request to join and answer the required questions, making sure you include your child's name in Question 2.

Please note the group is not a primary method of distributing important information; this will continue via the Audiri App.



Respect



Empathy



Excellence



Community



Government of South Australia
Department for Education

Pastoral Care Worker Update

Hello ETPS family and friends!

I am excited to be back at school after backpacking through Europe the past 2 months. My favorite part of the trip was the Black Forest in Germany. You can see me at the waterfall in Triberg (a town in the Black Forest) on the right.

Getting back into the swing of things, I will be continuing to run Verandah Activities at Lunchtime on Thursdays and Fridays—this is a space for students to come play if they are lost for things to do in break times or need some support in making friends.

This semester I will also be continuing to run the Kimochis program with some of the classes; M3, M4, H22, and H23. For those of you who are new to Kimochis, Kimochis are a family of cuddly soft toy creatures accompanied by a large array of little emotion cushions. They are a proven system for helping young people grow and transform by dealing skillfully with their feelings.

Kimochi (KEY. MO. CHEE) means “feeling” in Japanese. Sometimes young people (and adults) have strong feelings that can fuel challenging behaviours. Sometimes it's hard to know how to communicate when you are in an emotional moment. The Kimochis lessons teach young people how to identify and communicate their emotions in an effective way that is fun and engaging. They help young people feel happy, safe, confident, compassionate and successful. And they help them establish and sustain strong friendships, get along with each other, and become resilient.

As parents and caregivers, you can support your child's emotional learning by asking them about their feelings and giving them the space to express their emotions. The Kimochis feelings with faces are a great tool for helping young people identify what they are feeling. And our feelings and what we do with them are important.

Anna
Pastoral Care Worker



Verandah Activities

Come and join us on the veranda
in front of the Robson building for some fun activities at
Lunchtime on Thursdays & Fridays!

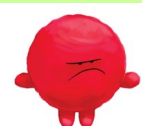


Kimochis



FRIENDLY

KIMOMAZA
Friendly faces create
friendly places.



MAD

KIMOMAZA
It's okay to be mad,
but it's not okay to be mean.



Respect



Empathy



Excellence



Community



Government of South Australia
Department for Education

Swap & Share



Second Hand Uniforms



Bring in your old school uniforms to **swap** with other second-hand sizes.



And, if you don't need your uniforms any longer, donate them to be **shared**.



If you would like a second hand uniform and you don't have any old uniforms to swap, then you can **donate a gold coin** instead.



The Swap & Share will be operating out of



**The Nest on Thursday afternoons
between 2:30pm - 4pm.**